

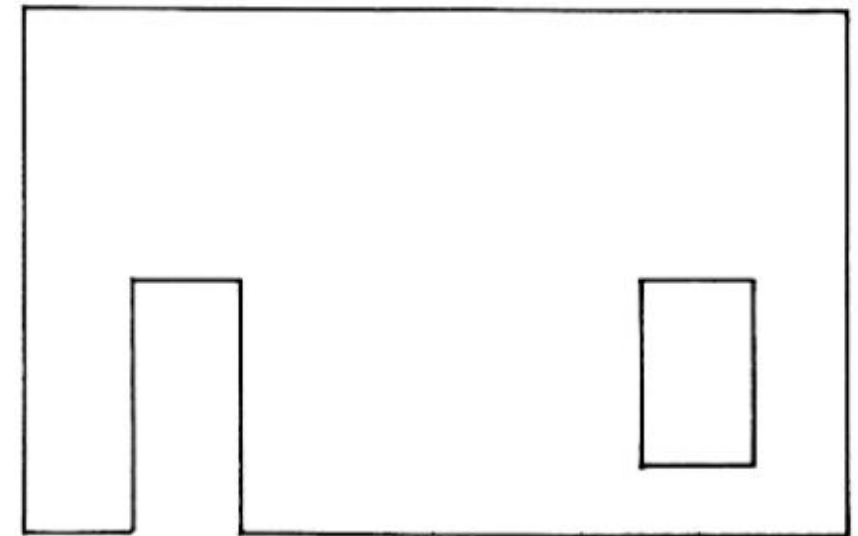
CONSTRUCTING FRAMED SCENERY

Using Flats

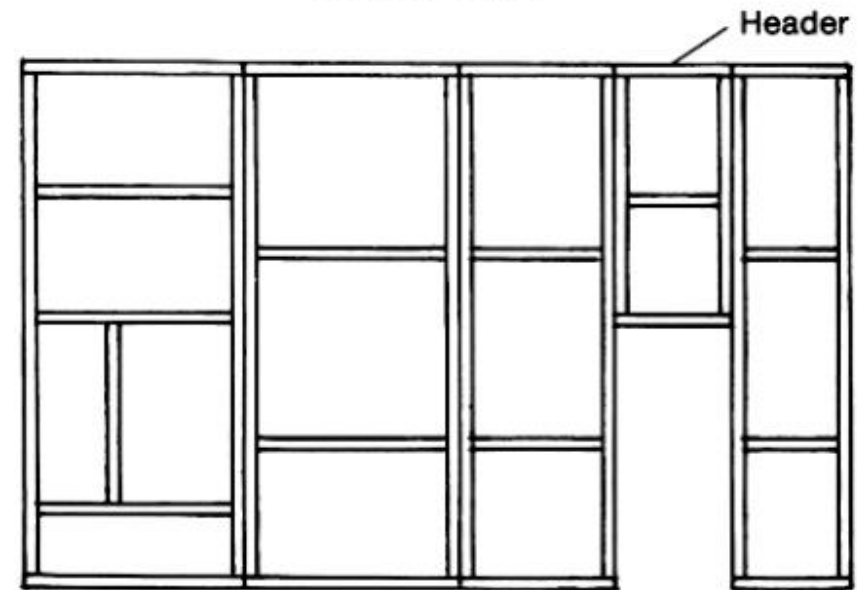
Joining Flats

To build larger walls, flats can be joined together, either by screwing the stiles together or adding tight pin hinges to the stiles.

- A 35mm x 70mm timber brace or stiffening batten is attached to the back to stabilize the flats.
- Seams are filled with joint compound and painted.
- Smaller flats are used to create openings for doors and windows.



Front elevation



Header

Flat Flat Flat Flat

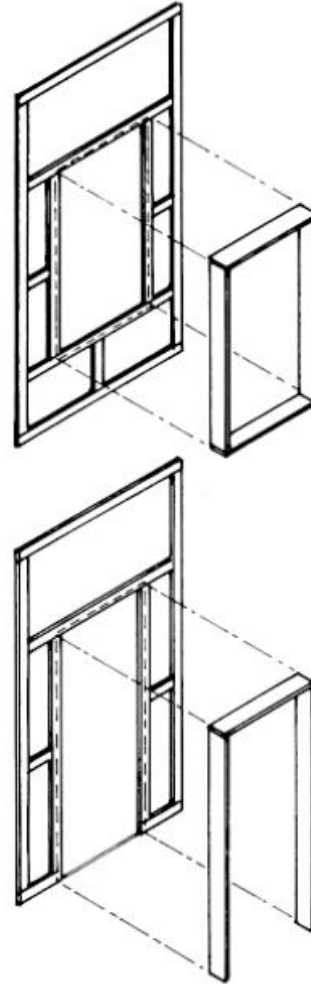
Rear elevation

Openings

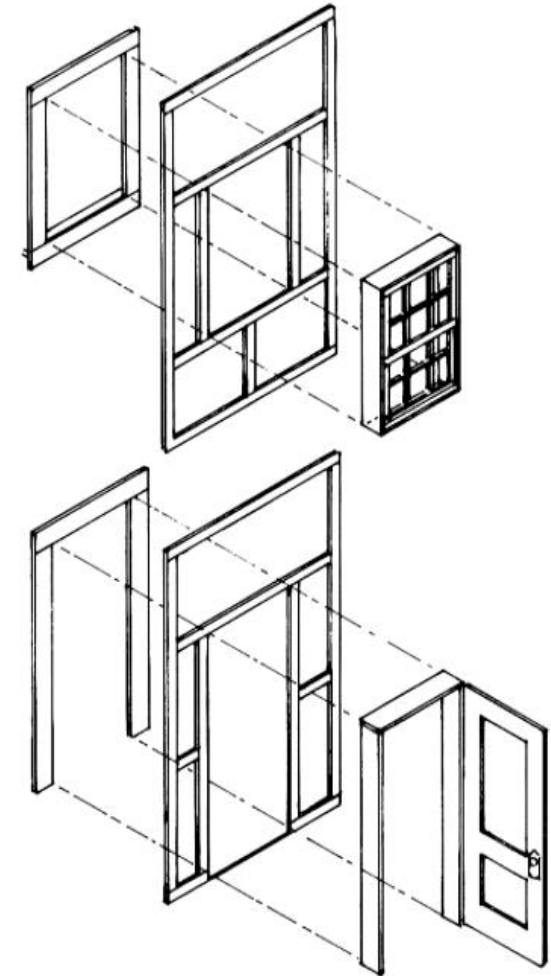
To create the illusion of wall thickness, add a frame called a **reveal**.

Dependent doors and windows are attached to the host flat.

- Door units will have three basic parts (1) the actual door, called a shutter, (2) the frame (reveal) comprised of the jamb (vertical members) and header (top piece) and (3) the trim.
- Window units also have a **reveal** and trim, but the shutter is replaced with a window sash which can be fixed or moveable.

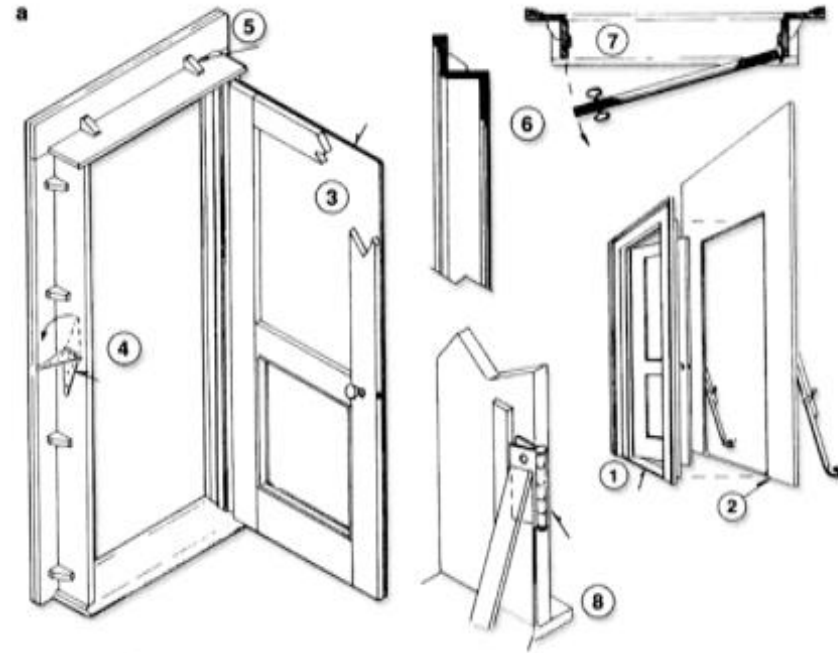


While doors may be any size, the standard door reveal is 1.0 metres x 1.9 metres.



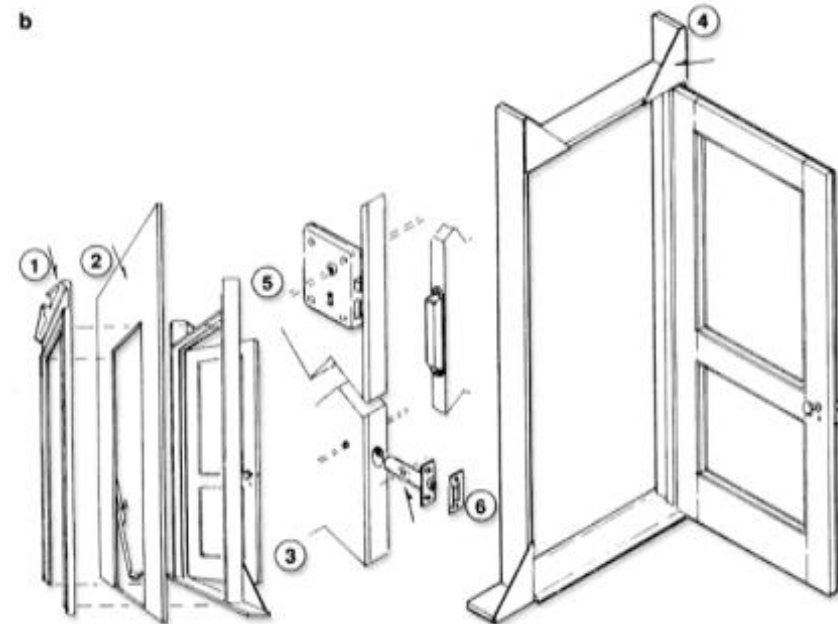
While window sizes may vary, the standard window reveal is 1.2 metres x 1.2 metres.

Independent or dependent doors

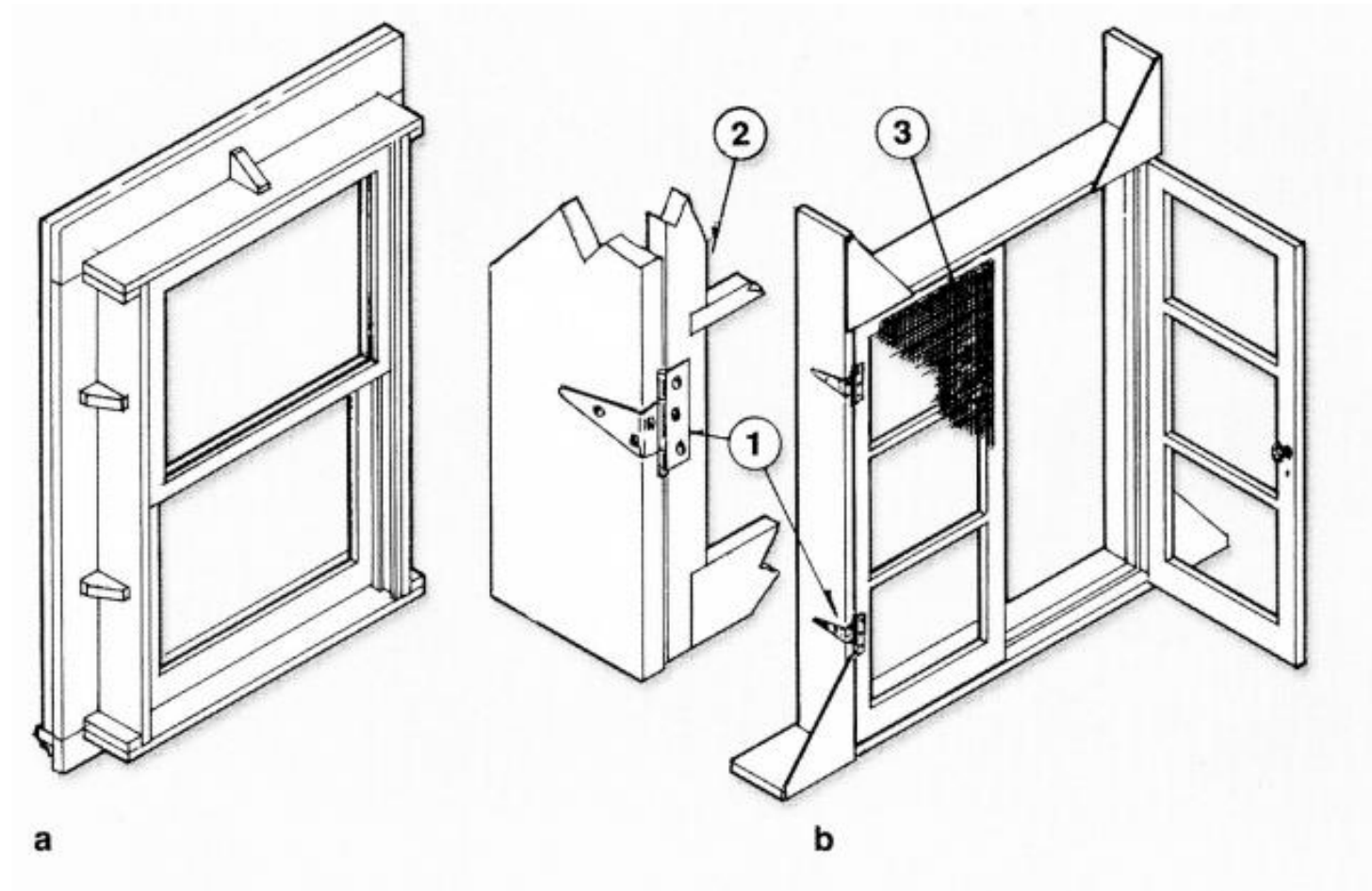


Door Construction

- a** Independent door:
 - 1** Door reveal and trim built as one unit.
 - 2** Flat with standard door opening.
 - 3** Detail of door construction.
 - 4** Angled strap hinge on jamb to hold door unit in the opening.
 - 5** Blocks to hold trim in place.
 - 6** Cross section of door unit through header.
 - 7** Plan of the independent unit showing the hinging.
 - 8** Butt hinge on door.
- b** Dependent door:
 - 1** Separate trim.
 - 2** Flat with a standard door opening.
 - 3** Door and reveal.
 - 4** Corner blocks to hold reveal square.
 - 5** Rim lock. Attached on back side of door.
 - 6** Tubular latch. Sets into edge of door.



Window construction



Window Construction

- a** Double-hung window. Trim is attached to reveal in the same manner as the independent door's trim.
- b** Casement window. The reveal is constructed in the same way as the dependent door with hinged sashes.
 - 1** A bent T-strap hinge in place of the butt hinge.
 - 2** Notched mullions.
 - 3** Galvanized screening to strengthen the sash and simulate glass.