

Internet Explorer 8



Complete Quick Reference Guide

The Internet Explorer 8 Interface

Command Area



Scroll Bar

Status Bar

- The **Command Area** is where you can type a Web address, search for information, and navigate between pages.
- The **Scroll Bar** lets you scroll up and down (and/or side to side) through a Web page. If a Web page is wider than your screen, you will see a horizontal scroll bar appear at the bottom of your screen.
- The **Status Bar** shows you vital statistics about the Web page you are viewing.



Parts of a Web Address (URL, Uniform Resource Locator)

http://www.	Protocol. HTTP = Hyper Text Transfer Protocol.
mycompany.com	Domain name. References entity that owns the Web site.
/index	Resource. A folder, drive, or network location accessible via the Internet.
.html	Extension. Defines the file type referred to in URL. Commonly .html.

<http://www.mycompany.com/index/home.html>

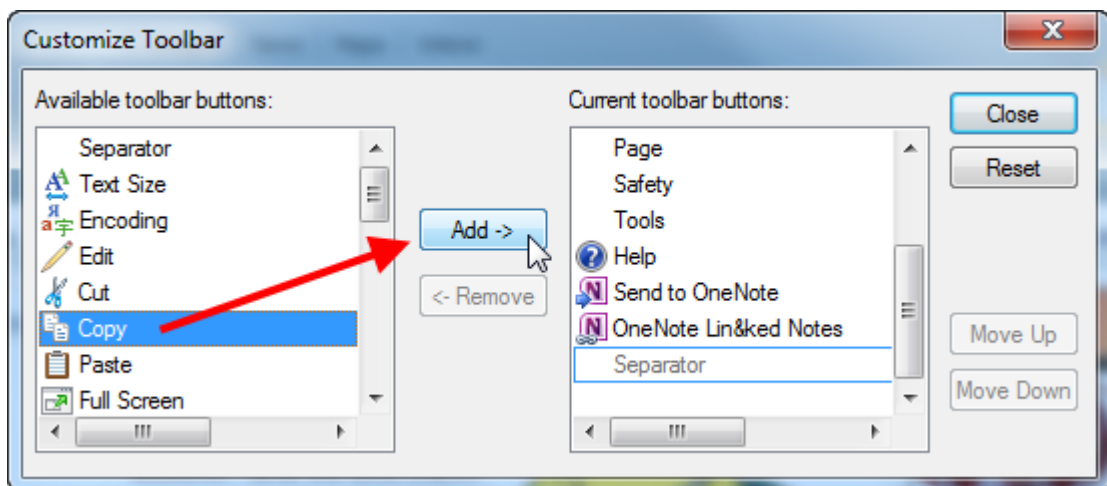
Customizing the Command Bar

Right-click in an empty portion of the Command Area → Customize → Add or Remove Commands.

Select commands from the list on the left and click Add.

Insert separators to organize commands.

Use Move Up/Move Down commands to further organize commands.



Search Engine Tips & Tricks

Wildcards

Most search engines take advantage of two types of wildcards: the asterisk (*) and the percent symbol (%). The asterisk is more general and helps you match a particular term.

For example, if you searched for "chemi*," you would get results for chemical, chemist, chemistry, etc.

The percent sign usually denotes a single letter or character and is helpful in correcting a misspelled word. For example, if you searched for "gene%logy," you will get a few responses for **geneology** and many responses for **genealogy** (the correct spelling)

Quotes

When using most search engines, you can search for a particular phrase by enclosing your search in double quotes. For example, to browse Web sites that contain Hamlet's famous line "To be or not to be," simply type the phrase, with double quotes around it, into the text field of a search engine. The results returned contain effectively all Web pages on the Internet containing that particular quote.

Keywords

The example of "car" as a search term will return millions of results because it is too general. You can specify to a search engine that you want to search for one particular class of cars by adding more keywords, but also adding some operators to help refine the search. For example, if you searched for "cars + hybrid" you would retrieve many more results about hybrid cars and hybrid car technology.

Conversely, if you searched for "cars - racing - sports" you would get results about the more modest vehicles on the road today.

Definitions

Browser

A browser is a program that finds and displays text, images, and other data from the World Wide Web or some other network.

Cache

Memory used by a browser to store recently and frequently accessed data.

Cookies

A small piece of information stored on the computer when someone visits a Web site on the Internet.

E-mail

A means of sending electronic messages from one computer to another over the Internet or other network.

FTP

Acronym for **File Transfer Protocol**. A type of communication protocol used to transfer data from one computer directly to another.

Home Page

A home page is a particular Web site on the Internet or other network that is displayed as soon as a browser program is launched.

HTML

Acronym for **Hyper Text Markup Language**. HTML is the language of the Internet.

HTTP

Acronym for **Hyper Text Transfer Protocol**. A type of communication protocol used mainly to transfer Web site information (like HTML) and components over the Internet or other network to a user's computer.

Hyperlink

A reference that points from one document to another or from one part of a document to another part of the same document.

Internet

Synonym for **World Wide Web**. A large collection of interconnected computer networks that span the globe.

ISP

Acronym for **Internet Service Provider**. An ISP is like a phone company that, instead of voice communication, sells access to the Internet to large corporations and individual users alike.

Phishing

Phishing is a type of scam that works by creating a Web site that looks like a legitimate company, such as an online retailer or a bank.

RSS

Acronym for **Really Simple Syndication** (or sometimes Rich Site Summary). Subscribers to an RSS service (or feed) receive new information about a particular topic when they connect to the Internet.

Search Engine

A program that gathers information about Web sites and documents on the Internet that are relevant to a particular search term or phrase.

URL

Acronym for **Uniform Resource Locator**. It refers to the address of a particular Web site or other resource on the Internet.

Web Page

A single page on the Internet that contains information.

Web Site

A collection of Web pages on the Internet that contain information.

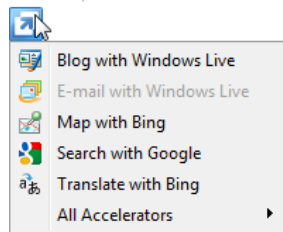
World Wide Web

Synonym for **Internet**. A name given to all documents on all servers that are accessible via HTTP protocol on the Internet.

Accelerators, Web Slices, InPrivate

Accelerators streamline common Internet tasks with a single click such as e-mailing information, searching on a map, translation of a word, etc.

Select text, click Accelerator icon, and choose action.



Web Slices are programmed into certain Web sites. They can keep you alerted of the latest changes via the Favorites Bar.



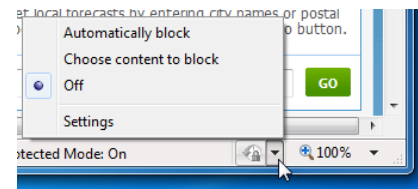
InPrivate Browsing

will not record history, usernames/passwords, or form data while browsing the Internet.



InPrivate Filtering

will let you control what information your browser sends to third-party information gathering services.



Adding Favorites

Click Favorites → Add to Favorites. Give it a name and save location:

